

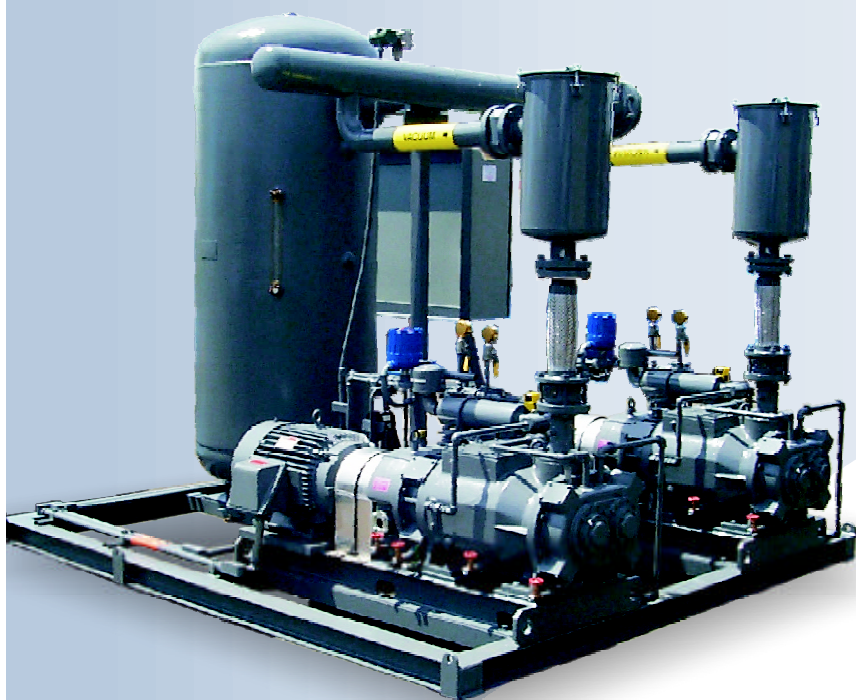
NASH EDPS CHEMICAL DUTY
VACUUM SERIES

The Nash EDPS is designed for chemical and pharmaceutical applications.

The direct driven uniquely profiled screws are ideal for handling your processing needs including large capacities.

The units can be direct cooled or indirect cooled depending on the application. An optional air cooling arrangement can be provided to ease installation.

Oil free operation for your dry pump is maintained by using a gas purged seal that is better than mechanical seals.



Announcement

DRY-PRO[®]

NEW

DRY-PRO SCREW SERIES

COMPLETELY DRY SYSTEMS
FROM 20 M³/H UP TO 25,000 M³/H

STAND ALONE SINGLE PUMPS
UP TO 2.295 M³/H

Features

- ▶ Simplicity
- ▶ Single stage design
- ▶ Unique screw profile
- ▶ Straight gas path
- ▶ Oil-free pumping chamber
- ▶ Large capacity
- ▶ Compact sizes
- ▶ Low-noise low vibration
- ▶ Engineered to your standards

Benefits

- ▶ Reliable
- ▶ No interstage condensers
- ▶ Energy efficient
- ▶ No product contamination
- ▶ No oil disposal costs
- ▶ Minimal floor space requirements

NASH EUROPE BV

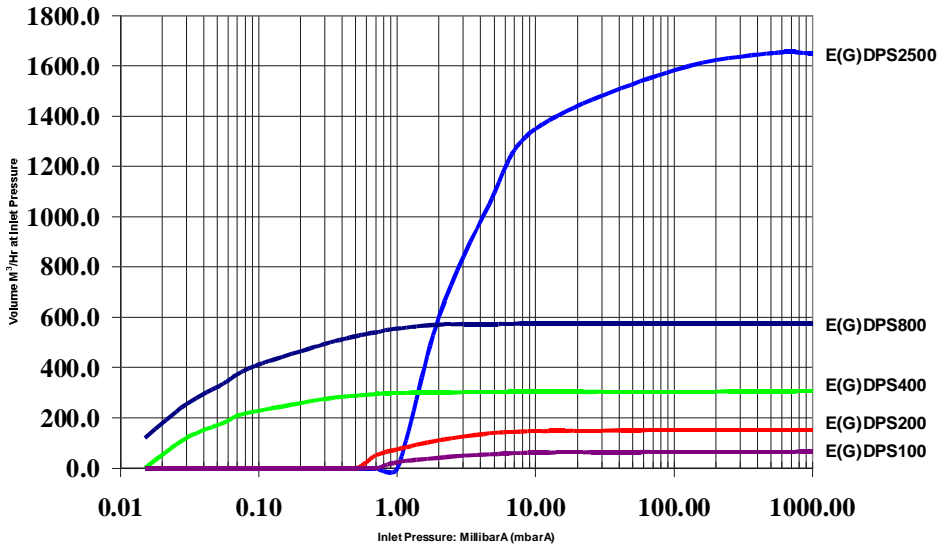
Industrieweg 15

1566 JN ASSENDELFT - The Netherlands

Tel: +31 75 6470170 Fax: +31 75 6470175

e-mail: Nash-Europe@nasheng.com website: www.nash-europe.com

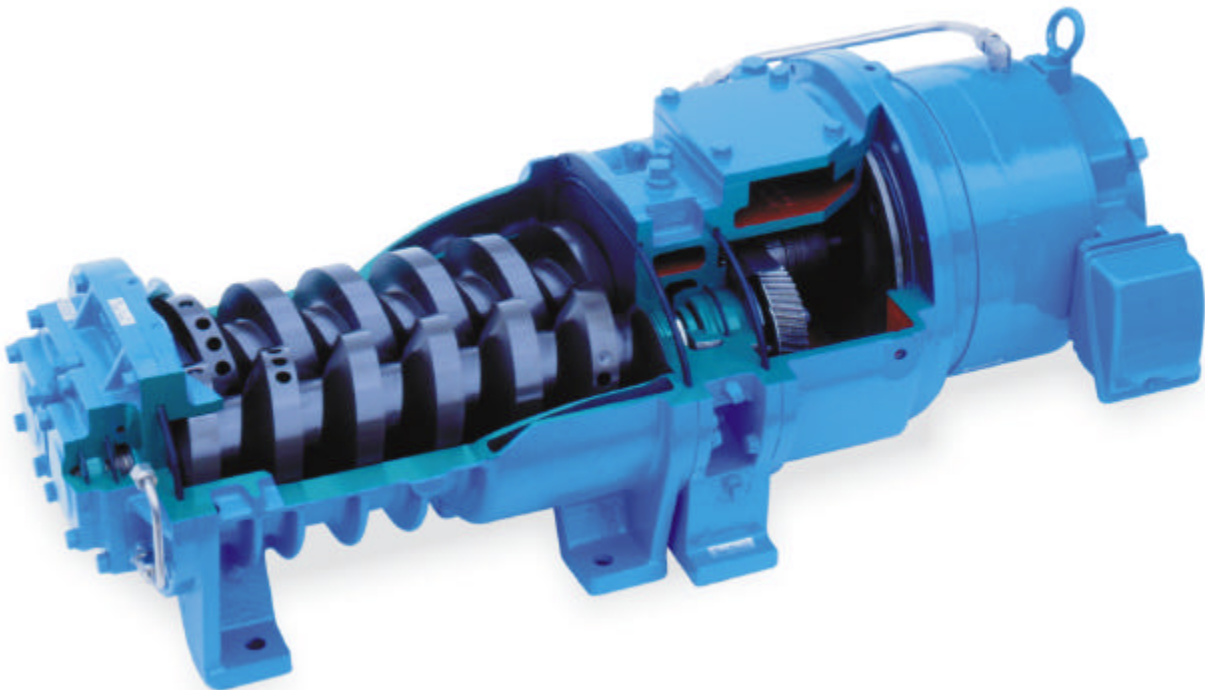
50 Hz E(G)DPS Performance Data



EDPS model			EDPS100	EDPS200	EDPS400	EDPS800	EDPS2500
Capacity	50 Hz	m3/h	66	150	300	540	1620
	60 Hz	m3/h	84	187	373	662	2275
Maximum Sound level *		db(A)	77	80	82	85	85
Ultimate pressure		mbar abs.	0.4	0.13	0.07	0.07	0.13
Motor size		kW	4	5.5	11	22	75
Water usage		l/min	2	4	6	12	30
Foot print (mm), approx.		Length	1168	1270	1600	1750	2135
		Width	432	762	864	700	1780
		Height	560	650	730	820	1525
Weight, approx.		kg	150	200	330	660	1800

* with optional exhaust silencer

NASH[®]
can offer you the
best Equipment,
Engineering and
Service in the
industry.
Give yourself
peace of mind by
getting your next
vacuum pump from
NASH[®]



NASH[®]

ALMOST 100 YEARS OF VACUUM EXPERIENCE

Dry pumps - Liquidring vacuum pump - liquidring compressors - Ejectors - Engineered systems